

CoroDrill® DE10

Time for change

SANDVIK
coromant

Introducing CoroDrill® DE10, the new best-performing exchangeable-tip drill designed for short-hole drilling between diameters 9.00-17.90 mm (0.354-0.705 inch) across all material groups, offering a large cutting data window with high cutting parameters right from the start.

Due to its robust design, the CoroDrill® DE10 excels at high feed rates, ensuring lower cost per component and reduced CO2 emissions.

Features and Benefits

- Patented pre-tension clamping interface and strong drill tip geometry enable secure and robust drilling
- Interface design offers good centering capabilities leading to straighter holes and tighter tolerances
- One geometry for all materials and no need for a pilot drill means less stock inventory
- Featuring the universal -M5 geometry the tool offers seamless plug-and-play functionality with recommended cutting data
- Optimized chip flute geometry with two twisted coolant holes for good chip evacuation and hole quality



DURAMILL
INDUSTRIAL SUPPLIES
an MSC Company

Call Duramill today to learn about the latest Sandvik Coromant Solutions

877.363.6455 | duramill.ca

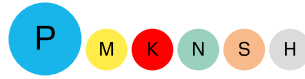
Grade and geometry recommendations

-M5 geometry

One geometry for all materials.

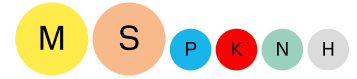


Grade GC4334



- Tough, fine-grained substrate with high Cr content and PVD coating (AlTiN) produced with Zertivo™ technology
- High reliability with improved edge security offers resistance against built-up edge and chipping

Grade GC2334



- Tough, fine-grained substrate with high Cr content and a thin, multi-layer PVD coating (AlTiCrN) produced with Zertivo® technology
- For high reliability and improved resistance against chipping and flaking on land margin

← Wear resistance → Toughness

One geometry. No compromises.

The -M5 tip geometry is unique, and offers uncompromised performance in all materials and a wide range of cutting data. In any other exchangeable-tip drill concept, you will need multiple geometries.

With this one-size-fits-all design, CoroDrill® DE10 is easy to apply and exceptionally useful for mixed production.

Key grip

Direct-pressed key grip for improved durability and safety.

Land margin

Offers dynamic stability, consistently reduces wear in ductile materials.

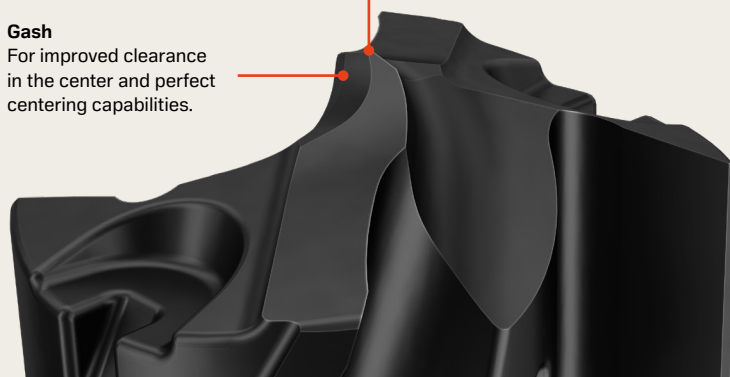


Chisel edge

Along with the gash, it creates a perfect balance of strength and low cutting forces.

Gash

For improved clearance in the center and perfect centering capabilities.

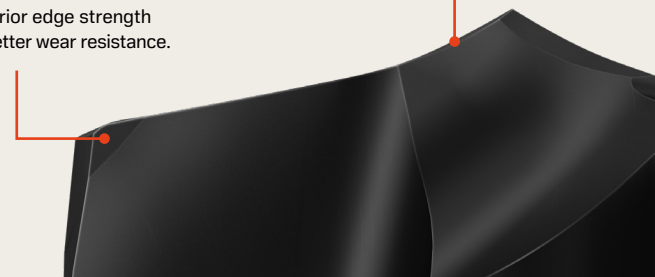


Point angle

Stable and vibration-free engagement in the workpiece. Vital for good centering and hole quality.

Corner reinforcement

Superior edge strength for better wear resistance.



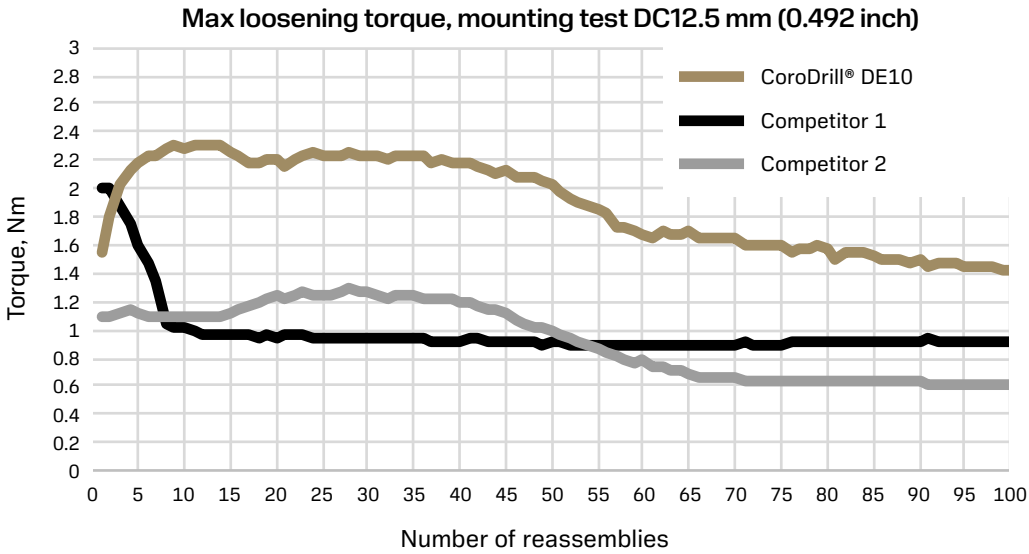
Durable tip and body

Featuring an optimized chip flute geometry with two twisted coolant holes, the drill tip of CoroDrill® DE10 stands the test of time, achieving good chip evacuation and hole quality. Coupled with a high-strength drill body with reinforced contact faces, it offers market-leading tool life.

When used with recommended feeds and speeds, CoroDrill® DE10 delivers an average tool life increase of 40% or more*, regardless of the material.

40%
Tool life increase

*Recorded against competitors in the customer environment.



CoroDrill® DE10 has a higher loosening torque level in general and less reduction in torque overall, improving the drill body tool life.

Familiar design with a new level of security

The pre-tension clamping interface of CoroDrill® DE10 is just like the ones you are used to, but with next-level security. This patented solution is the most robust design of its kind.

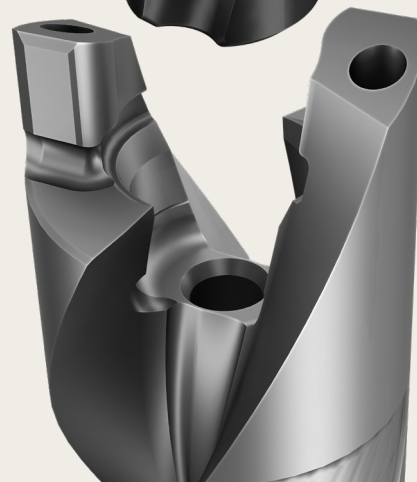
Trouble-free drilling at high feeds and speeds.



Fast and easy tip changes, no spare parts needed.

Superior strength and high clamping forces.

Good centering capabilities lead to straighter holes and tighter tolerances.



More drill tips per drill body.

Product range

Drill bodies

Drill diameter, mm (inch)	Shank type	Drill depth (xDC)
9.00–9.9 (0.354–0.390)	Cylindrical (mm and inch)	3, 5, 8
10.00–17.90 (0.394–0.705)	Cylindrical with flat according to ISO 9766 (mm and inch)	3, 5, 8

Drill tips

Drill dimension, mm (inch)	Geometry	Grade	Application
9.00–17.90 (0.354-0.705) DC available in 0.1 mm increments	-M5	GC4334	ISO P, M, K, N, S, H
9.00–17.90 (0.354-0.705) DC available in 0.1 mm increments	-M5	GC2334	ISO M, S, P, K, N, H



Learn more about CoroDrill® DE10:
sandvik.coromant.com/coromillde10



Call Duramill today to learn about the latest Sandvik Coromant solutions.
877.363.6455 | duramill.ca

Available
Today At

DURAMILL
INDUSTRIAL SUPPLIES
an MSC Company

SANDVIK
Coromant