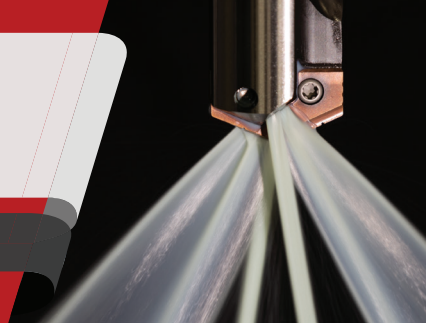


T-A Pro[®]

The *best* just got *better*.



Ø 0.437" - 1.882" (11.10 mm - 47.80 mm)



Optimized flute design



ISO-specific geometries



Proprietary coolant outlets



Lengths from 1xD to 15xD



ALLIED MACHINE | **THE HOLEMAKING**
& ENGINEERING | **EXPERTS**

Holemaking Solutions for Today's Manufacturing

TOOLING
NEW
SOLUTIONS

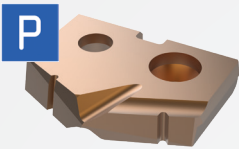
DURAMILL
INDUSTRIAL SUPPLIES
an MSC Company





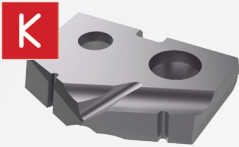
REDESIGNED INSERTS

Ø 0.437" - 1.882" (11.10 mm - 47.80 mm)



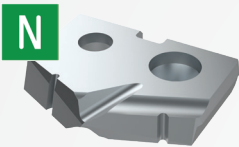
STEELS

- Designed to provide increased penetration rates and tool life in steel applications.
- Excellent chip control with superior geometry and edge.
- Increased heat resistance and improved tool life with Allied's multilayer AM300 coating.



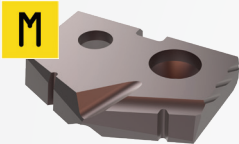
CAST IRONS

- Uniquely designed for cast/nodular iron applications.
- Geometry that provides maximum tool life, reduced exit burr, and improved hole finish.
- Increased abrasion resistance and tool life with Allied's multilayer TiAlN coating.



NONFERROUS

- Designed for applications in aluminum, brass, and copper.
- Geometry that yields excellent chip control in these softer materials.
- TiCN coating for versatility to run in a variety of materials while reducing buildup.



STAINLESS STEEL

- Designed for all stainless steels and heat resistant super alloy (HRSA) materials.
- Optimized geometry for improved chip formation while minimizing exit burr.
- Industry leading tool life in stainless and HRSA materials with Allied's new AM460 coating.

REDESIGNED HOLDERS

NEW HOLDER DESIGN
Optimized flute design to **prevent chip packing** from slowing you down



NEW INSERT DESIGN
ISO-specific geometries with a new point design to **simplify** your insert choices

NEW COOLANT DESIGN
Proprietary coolant outlet configuration provides **superior** cooling even in **low-coolant applications**

Duramill Industrial Supplies

6877 Edwards Blvd.
Mississauga, ON L5T 2T9
Canada
www.duramill.ca
(1) 877.363.6455

DURAMILL
INDUSTRIAL SUPPLIES
an MSC Company

Contact us about a **Guaranteed Test** for a no-risk way to increase production and improve your process!

Contact your local Field Sales Engineer for details on our Guaranteed Tests.

DAVID FLEGAR

(416)688-8426
dflegar@alliedmachine.com

SCOTT DUNN

(905)699-9913
scott.dunn@alliedmachine.com

Allied Machine offers expert engineering support. Whether you need a quote, a test, or an application solution, a highly skilled and trained engineer is standing by, ready to help.
www.alliedmachine.com/contactus

Copyright © 2024 Allied Machine and Engineering Corp. – All rights reserved.
All trademarks designated with the ® symbol are registered in the United States and other countries.



WOHLHAUPTER

Holemaking Solutions for Today's Manufacturing