

INTRODUCING FUERDA[®] LATHE CHUCKS



EXCLUSIVELY FROM KAR

IN CANADA 

PRECISION P-SERIES DIRECT MOUNT TYPE D1 SELF-CENTERING SCROLL CHUCK

3-JAW WITH 2 PC.
HARD REVERSIBLE JAWS

- Semi-steel body

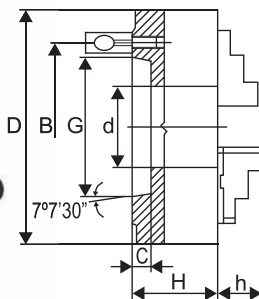


Rear View

DIMENSIONS

d (Hole Dia.)	B	G	C	H	h	Camlock Studs		
						Diameter	Thread	Qty.
4.0551"	6.7480"	5.5007"	0.7087"	4.6338"	2.244"	1"	M20 x 1.5	6

Chuck Diameter	Taper Size	Hole Diameter	Maximum Hole Enlargements	Maximum RPM	Weight	Code	Price
12"	D1-8	4.0551"	4.5276"	1,500	112 lbs.	410006	\$ 1,246.00



DISTRIBUTED BY:

DURAMILL

INDUSTRIAL SUPPLIES INC.

21 Bradwick Drive, Suites 2-3, Concord, ON L4K 1K6
Tel: (905) 738-8665 Fax: (905) 738-4862
www.duramill.ca ■ sales@duramill.ca

INTRODUCING FUERDA[®] LATHE CHUCKS

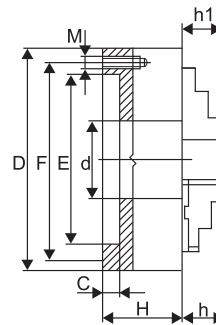
PRECISION P-SERIES UNIVERSAL PLAIN BACK SELF-CENTERING SCROLL CHUCKS

3-JAW WITH 2 PC.
HARD REVERSIBLE JAWS

- Semi-steel body
- Three pinion design

EACH CHUCK INCLUDES:

- 1 set of hard master jaws
- 1 set of hard top reversible jaws
- 1 set of mounting bolts
- 1 chuck wrench
- 2 hex keys



DIMENSIONS

D (Chuck Dia.)	F	E	d	C	H	h	h1	Adapter Mounting Bolts		
								M (Thread)	L	No. of Bolts
10"	8.8189"	7.8740"	2.9921"	0.1969"	3.347"	2.087"	1.339"	M12 x 1.75	1.18"	6
12"	11.2598"	10.2362"	4.0551"	0.1969"	3.701"	2.244"	1.693"	M16 x 2	1.18"	6
16"	14.2519"	12.9921"	5.3543"	0.1969"	4.134"	2.693"	2.165"	M16 x 2	1.57"	6

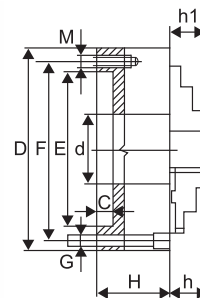
Chuck Diameter	Hole Diameter	Maximum Hole Enlargements	Maximum RPM	Code	Price
10"	2.9921"	3.5827"	2,000	410003	\$ 672.00
12"	4.0551"	4.4882"	1,500	410007	997.00
• 16"	5.3543"	5.7480"	1,000	410008	1,495.00

• 2 eye bolts included

PRECISION P-SERIES FRONT MOUNT PLAIN BACK SELF-CENTERING SCROLL CHUCKS

3-JAW WITH 2 PC.
HARD REVERSIBLE JAWS

- Semi-steel body
- Designed for use with all rotary tables and other devices where back mounting chucks cannot be used. Chucks can be mounted directly on 3/6 slot rotary tables or on a base plate when the rotary table has 3, 4, 6 or 8 T-slots.
- Base plates are designed for use with FUERDA 3 and 4 jaw, front mounting, self-centering lathe chucks



DIMENSIONS

D (Chuck Dia.)	F	E (H7)	d	C	H		h	h1	Screws			
					PS	PO			G (Thread)	Qty.	M (Thread)	Qty.
6"	5.5118"	4.9213"	1.6535"	0.1575"	2.559"	2.756"	1.693"	1.260"	3/8-16x2.76	3	M10	3
8"	6.9291"	6.2992"	2.1654"	0.1575"	2.953"	3.150"	1.772"	1.142"	3/8-16x3.15	3	M10	3
10"	8.8189"	7.8740"	2.9921"	0.1969"	3.347"	3.543"	2.087"	1.339"	1/2-13x3.54	3	M12	3
12"	11.2598"	10.2362"	4.0551"	0.1969"	3.701"	3.937"	2.244"	1.693"	5/8-11x3.94	3	M16	3
16"	14.2519"	12.9921"	5.3543"	0.1969"	4.134"	4.331"	2.639"	2.165"	5/8-11x4.53	3	M16	3

Chuck Diameter	Code	Price
6"	410000	\$ 399.00
8"	410001	525.00
10"	410002	715.00
12"	410004	1,049.00
16"	410005	1,569.00

Additional sizes and styles available soon!